

H. HOGE DRUK VENTILATOR - TYPE CHT

ALGEMEEN

Centrifugaal enkelaanzuigende hoog rendement ventilator met staalplaat behuizing en gegoten aluminium waaiër.

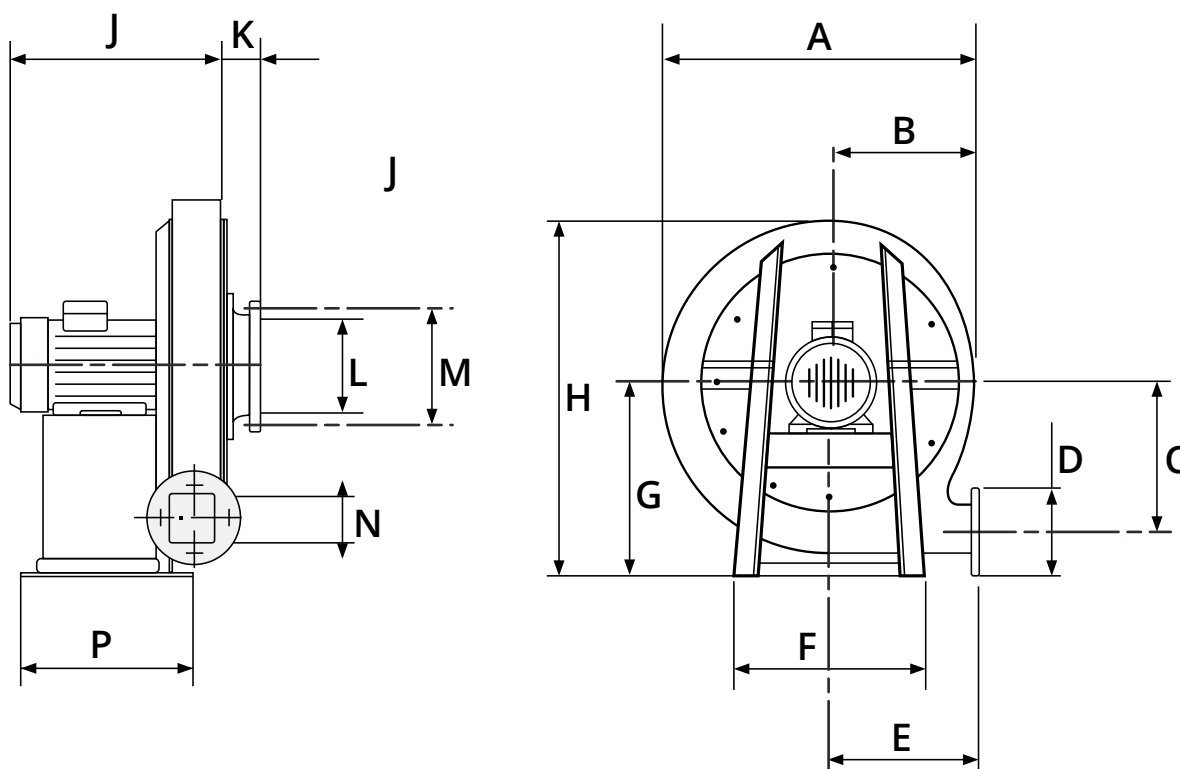
Max. debiet van 2000m³/h;
max. tegendruk van 10000Pa.

CONSTRUCTIE

- Staalplaat behuizing
- Hoge rendement turbine uit gegoten aluminium
- Temperatuur aangezogen lucht 120°C maximum
- De uitlaat kan in 7 verschillende standen geplaatst worden ten opzichte van de inlaat.
- Twee component spuitlak op basis van polyurethaan hars (RAL5010)



AFMETINGEN

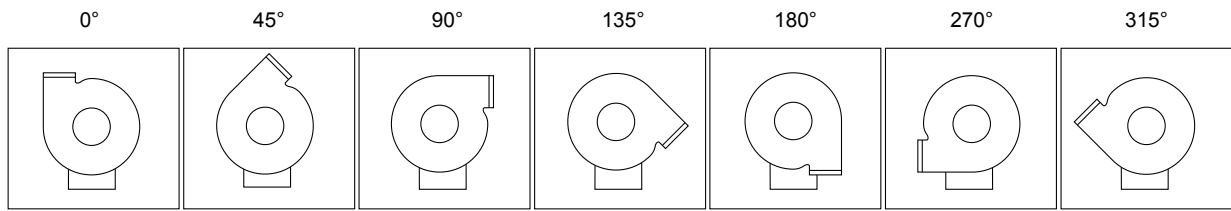


TYPE	A	B	C	D	E	F	G	H	J	K	L	M	N	P
142-2T-0.5	490	235	235	120	240	300	301	546	261	47	90	130	50	212
142-2T-0.75	490	235	235	120	240	300	301	546	261	47	90	130	50	212
148-2T-0.75	560	267	270	150	270	330	360	640	277	47	100	140	65	250
148-2T-1	560	267	270	150	270	330	360	640	300	47	100	140	65	250
148-2T-1.5	560	267	270	150	270	330	360	640	300	47	100	140	65	250
154-2T-1.5	628	297	308	160	300	356	395	710	303	49	115	160	70	325
154-2T-2	628	297	308	160	300	356	395	710	328	49	115	160	70	325
154-2T-3	628	297	308	160	300	356	395	710	328	49	115	160	70	325
160-2T-2	697	330	337.5	160	336	373	440	792	340	55	130	192	75	344
160-2T-3	697	330	337.5	160	336	373	440	792	365	55	130	192	75	344
166-2T-3	755	358	369	160	364	446	490	866	362	50	140	200	75	370
166-2T-4	755	358	369	160	364	446	490	866	391	50	140	200	75	370
166-2T-5.5	755	358	369	160	364	446	490	866	413	50	140	200	75	370
172-2T-5.5	817	388	404	175	390	450	516	925	420	49	150	200	70	395
172-2T-7.5	817	388	404	175	390	450	516	925	461	49	150	200	70	435
172-2T-10	817	388	404	175	390	450	516	925	499	49	150	200	70	395

TECHNISCHE GEGEVENS

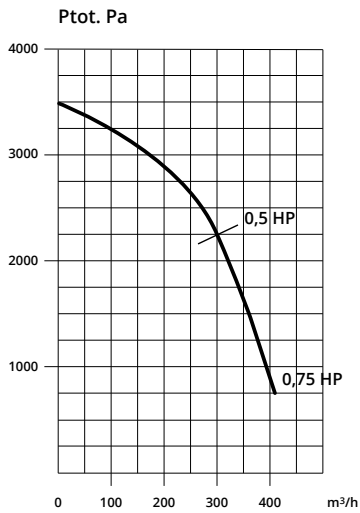
TYPE	SPAN- NING (V)	STROOM (A)		VER- MOGEN (kW)	RPM	MAX. Debiet	MAX. Druk	dB(A)	GEWICHT
		220 V	380 V						
142-2T-0.5	220/380	1.9	1.1	0.37	2765	300	3400	73	26
142-2T-0.75	220/380	2.51	1.45	0.55	2800	400	3400	74	29
148-2T-0.75	220/380	2.51	1.45	0.55	2800	350	4450	72	33
148-2T-1	220/380	3.17	1.83	0.75	2850	625	4450	72	38
148-2T-1.5	220/380	4.41	2.55	1.1	2850	800	4450	73	40
154-2T-1.5	220/380	4.41	2.55	1.1	2850	475	5550	80	44
154-2T-2	220/380	5.88	3.4	1.5	2855	950	5550	81	51
154-2T-3	220/380	8.3	4.8	2.2	2860	1240	5950	82	53
160-2T-2	220/380	5.88	3.4	1.5	2855	525	6950	81	63
160-2T-3	220/380	8.3	4.8	2.2	2860	950	7050	81	66
166-2T-3	220/380	8.3	4.8	2.2	2860	500	8450	82	74
166-2T-4	220/380	11.1	6.4	3	2895	1025	8550	83	84
166-2T-5.5	220/380	14.2	8.2	4	2895	1500	8850	83	88
172-2T-5.5	220/380	14.2	8.2	4	2895	1200	10300	88	94
172-2T-7.5	220/380	19.4	11.2	5.5	2925	1950	10750	89	107
172-2T-10	220/380	22.8	14.9	7.5	2930	2300	10500	89	125

UITBLAASRICHTINGEN

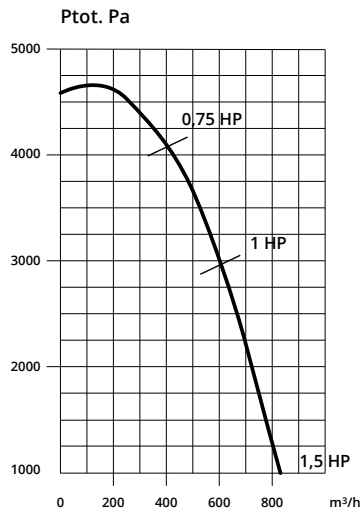


DEBIET / DRUK

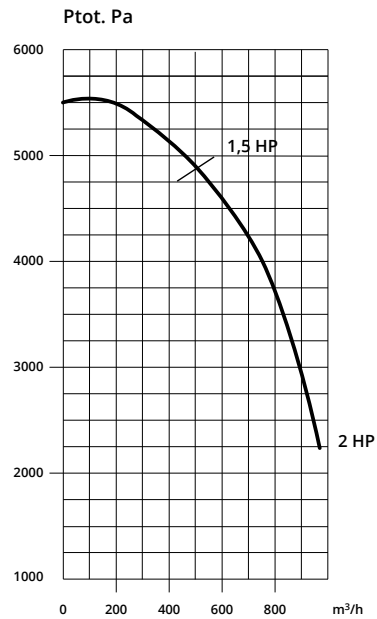
CHT 142



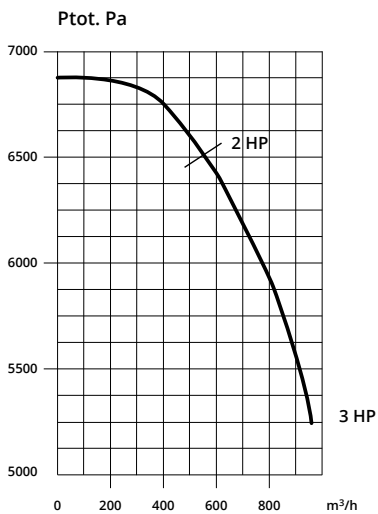
CHT 148



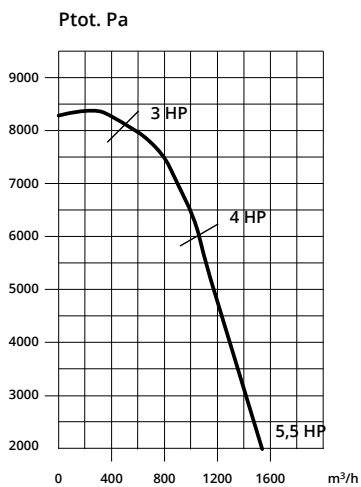
CHT 154



CHT 160



CHT 166



CHT 172

